



Case Study: SINGTEL



YOUR NETWORK. OUR CONNECTION.
www.mytnconnection.transition.com
www.transition.com



About SingTel

- Leading communications group with operations and investments in more than 20 countries and territories around the world
- Owns stakes in AIS in Thailand, Bharti in India, Globe in the Philippines, Pacific Bangladesh Telecom in Bangladesh and Telkomsel in Indonesia
- Provides a diverse range of innovative communications solutions for consumers and businesses

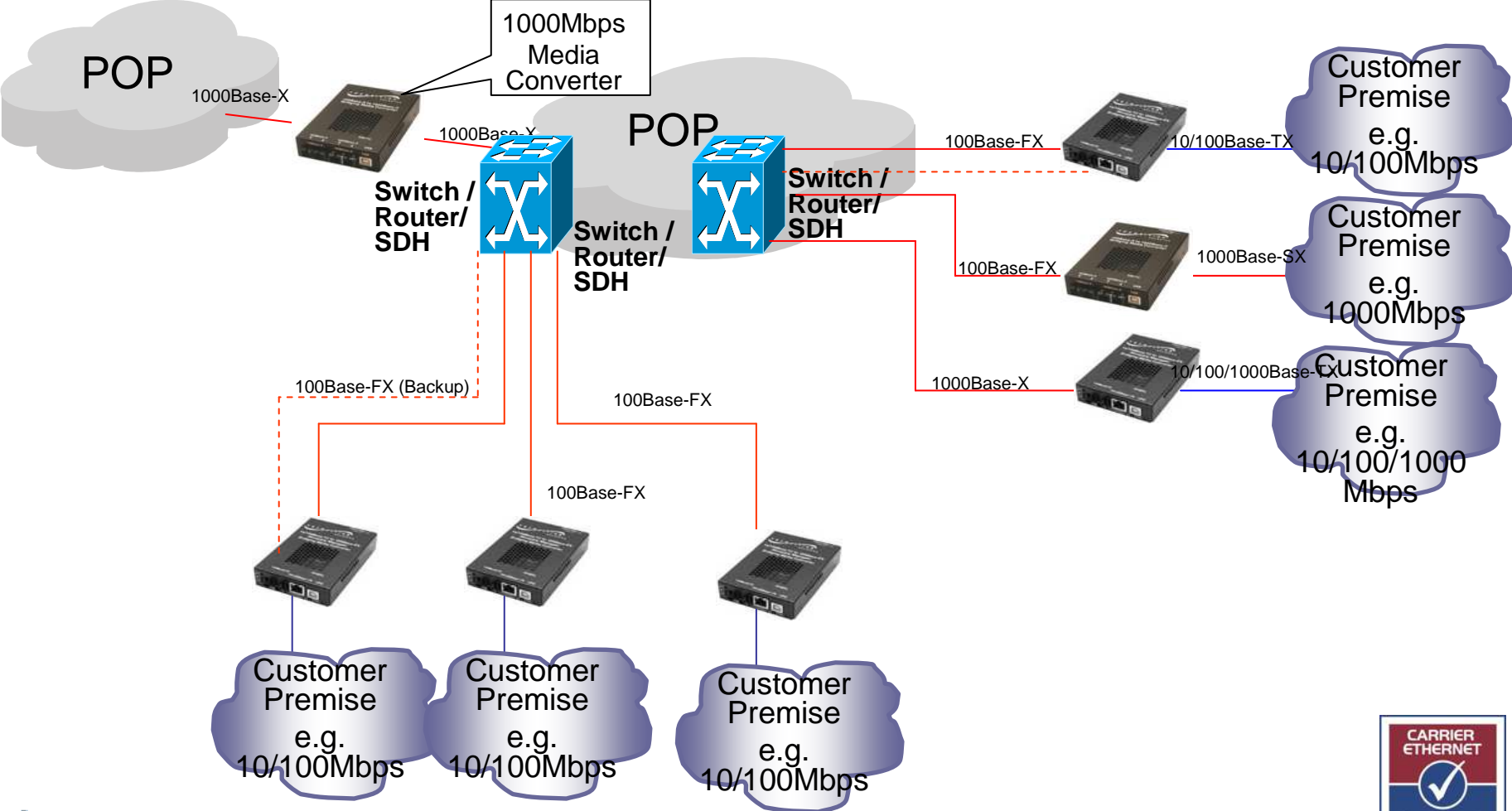


Mega@POP (Domestic IP VPN service)

- Suite of managed, business-class IP services aimed at providing a flexible, scalable and cost-effective one-stop IP networking solution to meet business needs
- Combines dynamic networking capability of IP and the security and reliability of private networking through SingTel's own private Gigabit IP backbone
- Based on industry-leading Multiprotocol Label Switching (MPLS) technology, SingTel Mega@POP provides a network-based IP VPN solution that combines the security of a private network with full Quality of Service features and the flexibility of IP



Application



Advantages of deploying TN products

- Full layer 1 and layer 2 control using media converters
- MEF 9 and 14 certification
- Able to inter-work with CISCO router and manage under one network management using CISCO works, features like:
 - Auto discovery
 - Critical link event
 - Last Gasp
 - Remote loop back
 - Transparent link pass thru
- Option of both single and dual fiber optic ports for fiber optic redundancy to premium customers
- Both remote OAM and IP managements are available at the same time



Products for such solution

Point System Slide in module



CFBRM10xx-1xx



CFBRM13xx-100

Standalone Media Converter



SFBRM10xx-1xx



SFBRM13xx-100

Port Interface

Port 1: 10/100Base-TX
Port 2: 100Base-FX

Port 1: 100Base-FX
Port 2: 1000Base-X



Products for such solution

Point System Slide in module



CBFFG10xx-1xx



CBFFG13xx-100

Standalone Media Converter



SBFFG10xx-1xx



SBFFG13xx-100

Port Interface

Port 1: 10/100/1000Base-TX
Port 2: 1000Base-X

Port 1: 1000Base-X
Port 2: 1000Base-X

